



IMPORTANT INFORMATION THAT WILL IMPACT YOUR COMMUNITY

LA CRESCENTA/ALTADENA PALM TREE TRIMMING PARKWAY TREE MAINTENANCE NOTICE OF UPCOMING PROJECT

Los Angeles County Public Works has scheduled tree trimming operations for parkway trees in your neighborhood beginning late August 2023.

These operations will include the trimming and removal of some parkway palm trees within road right of way. Where parkway trees are being removed, we will coordinate with the adjacent property owner to plant a new tree, provided adequate space is available.

If you park on the street, please make necessary arrangements to park beyond the construction zones. "No Parking" signs will be placed 48 hours prior to work starting. Work will be limited to the working hours of 7am – 4pm, Monday – Friday. Also, please take note that all existing street parking restrictions are still in effect.

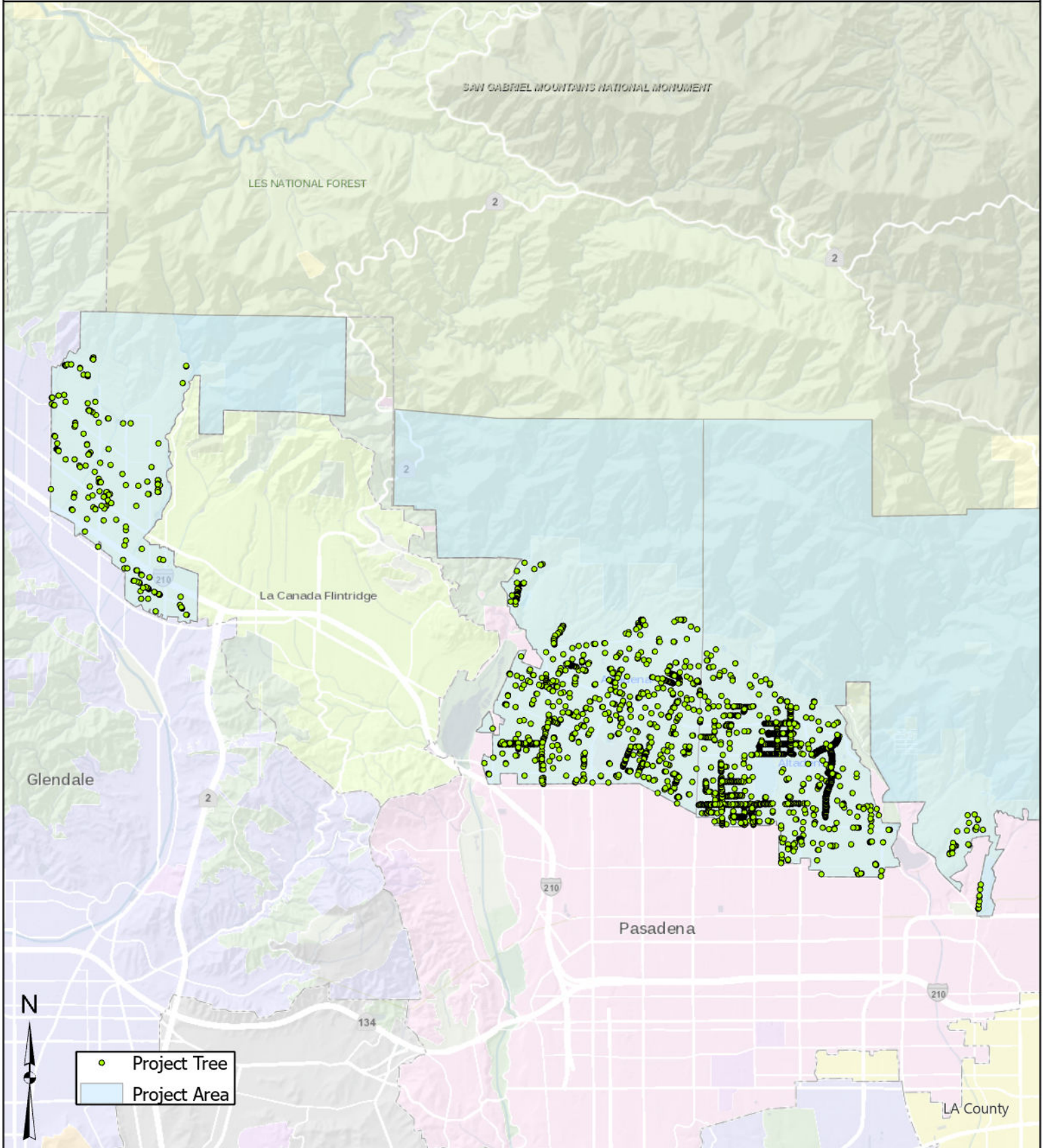
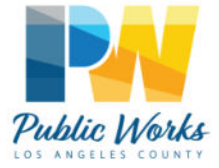
If you have any questions regarding this project, please contact our Urban Forestry Unit, Maintenance District 2, at (818) 249-0248 during business hours of 7:00 a.m. and 4:00 p.m., Tuesday through Friday. Refer to the **La Crescenta/Altadena Palm Tree Trimming Project**. Persons who are deaf or hard of hearing may make contact by first dialing the California Relay Service at 7-1-1.



Individuals requiring reasonable accessibility accommodations may request written materials in alternate formats, physical accessibility accommodations, sign language interpreters or other reasonable accommodations by contacting our departmental Americans with Disabilities Act Coordinator at (626) 458-4081, from 7:30 a.m. to 5 p.m., Monday through Thursday (excluding holidays). Persons who are deaf or hard of hearing may make contact by first dialing the California Relay Service at 7-1-1. Requests should be made at least 1 week in advance to ensure availability. When making a reasonable accommodation request, please reference RM-2.



LOS ANGELES COUNTY PUBLIC WORKS PARKWAY PALM TREE MAINTENANCE



Project Name

La Crescenta/Altadena Palm Tree Trimming

Scale
N.T.S.