

IMPORTANT INFORMATION THAT WILL IMPACT YOUR COMMUNITY

ALTADENA BROADLEAF TREE TRIMMING 2023-2024 PARKWAY TREE MAINTENANCE NOTICE OF UPCOMING PROJECT

Los Angeles County Public Works has scheduled tree trimming operations for parkway trees in your neighborhood beginning October 26, 2023.

These routine operations will include the trimming and removal of some parkway trees within road right of way. Where parkway trees are being removed, we will coordinate with the adjacent property owner to plant a new tree, provided adequate space is available.

If you park on the street, please make necessary arrangements to park beyond the construction zones. "No Parking" signs will be placed 48 hours prior to work starting. Work will be limited to the working hours of 7am – 4pm, Monday – Friday, except Holidays. Work may be scheduled on Saturdays in select locations to minimize traffic impact in high traffic areas such as major streets or adjacent to schools. Also, please take note that all existing street parking restrictions are still in effect.

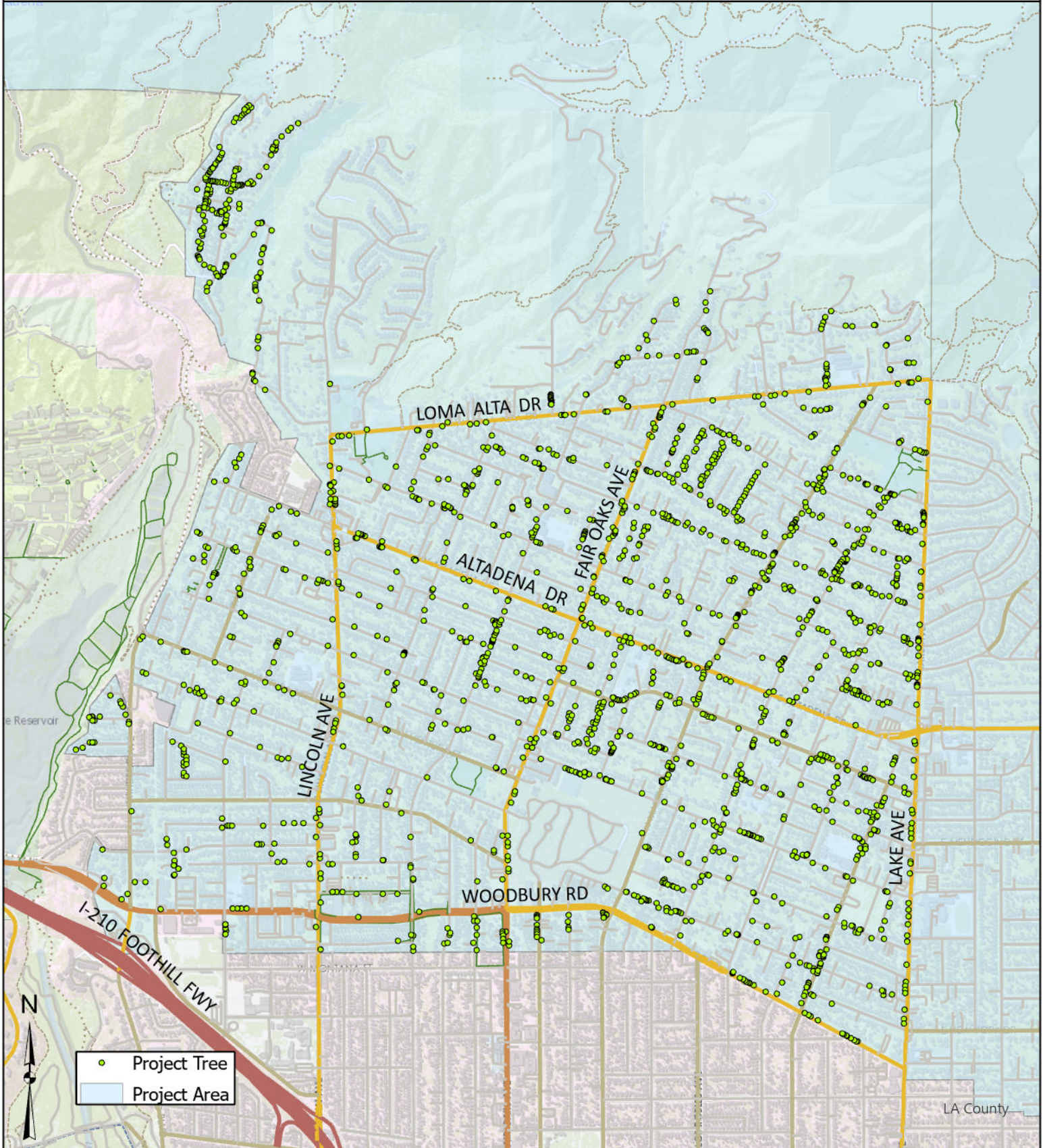
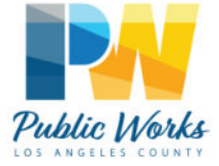
If you have any questions regarding this project, please contact our Urban Forestry Unit, Maintenance District 2, at (818) 249-0248 during business hours of 7:00 a.m. and 4:00 p.m., Tuesday through Friday. Refer to the **Altadena Broadleaf Tree Trimming Project**. Persons who are deaf or hard of hearing may make contact by first dialing the California Relay Service at 7-1-1.



Individuals requiring reasonable accessibility accommodations may request written materials in alternate formats, physical accessibility accommodations, sign language interpreters or other reasonable accommodations by contacting our departmental Americans with Disabilities Act Coordinator at (626) 458-4081, from 7:30 a.m. to 5 p.m., Monday through Thursday (excluding holidays). Persons who are deaf or hard of hearing may make contact by first dialing the California Relay Service at 7-1-1. Requests should be made at least 1 week in advance to ensure availability. When making a reasonable accommodation request, please reference RM-2.



LOS ANGELES COUNTY PUBLIC WORKS
PARKWAY BROADLEAF TREE MAINTENANCE
2023-2024



Project Name

Altadena Broadleaf Tree Trimming

Scale
N.T.S.